



AML21BBA2AB



AML21 Series, Electronic Control Pushbutton, Square, Standard Bezel, Unlighted, SPDT, Alternate Action, Snap in panel mount

Features

- 1, 2, or 4 poles.
- Silver or gold contacts.
- Full guard bezel option.
- Momentary or 2-level alternate action (push-on, push-off).
- UL recognized, CSA certified.
- Lamps can be furnished installed or ordered separately.
- Lamp circuit independent of switch circuit.

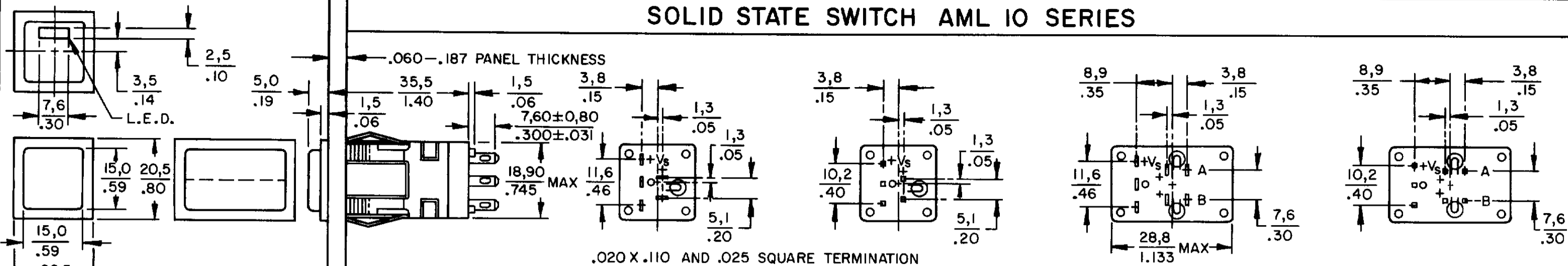
Notice

Button caps for MICRO SWITCH™ AML Pushbuttons are sold separately. Please see the links at the left for information on the buttons caps and other AML accessories.

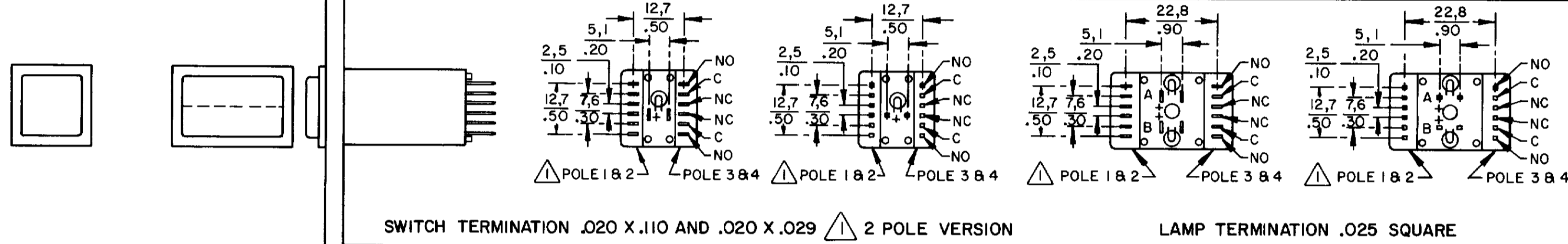
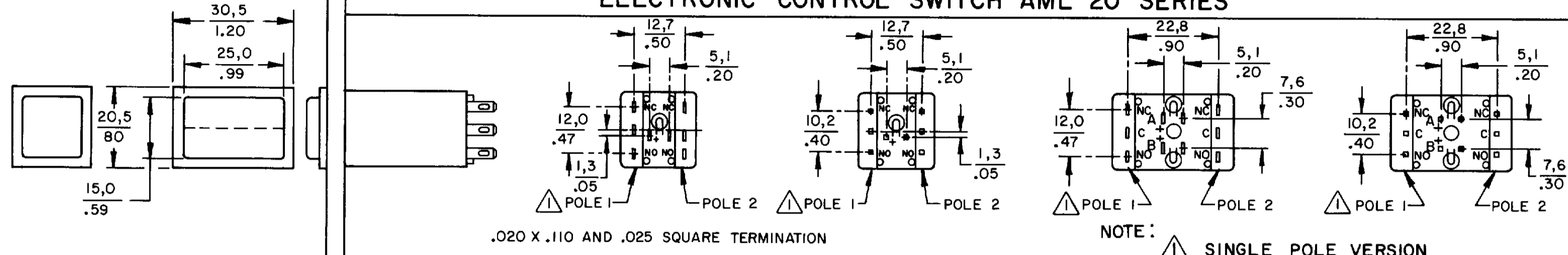
Product Specifications	
Product Type	MICRO SWITCH™ Pushbutton
Housing Type	Square
Circuitry	SPDT
Action	Alternate action
Mounting	Snap-in Panel
Lamp Type	Unlighted
Termination	.110 x .020 (Solder or Quick-Connect)
Ampere/Voltage Range (Resistive Load)	0.4-2 A @ 0.5-30 Vdc, 0.4-2 A @ 0.5 -250 Vac, 0.4-3 A @ 0.5-125 Vac
LED/Lamp/Neon Voltage	No Lamp Installed
Comment	use AML51 button
Availability	Global
UNSPSC Code	30211913
UNSPSC Commodity	30211913 Push button switches
Series Name	AML21

AML PUSHBUTTON AND INDICATOR SERIES

SOLID STATE SWITCH AML 10 SERIES

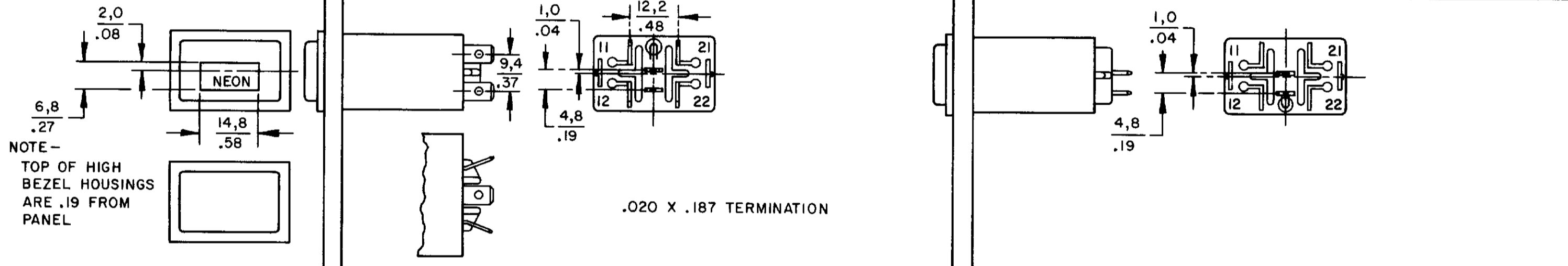


ELECTRONIC CONTROL SWITCH AML 20 SERIES

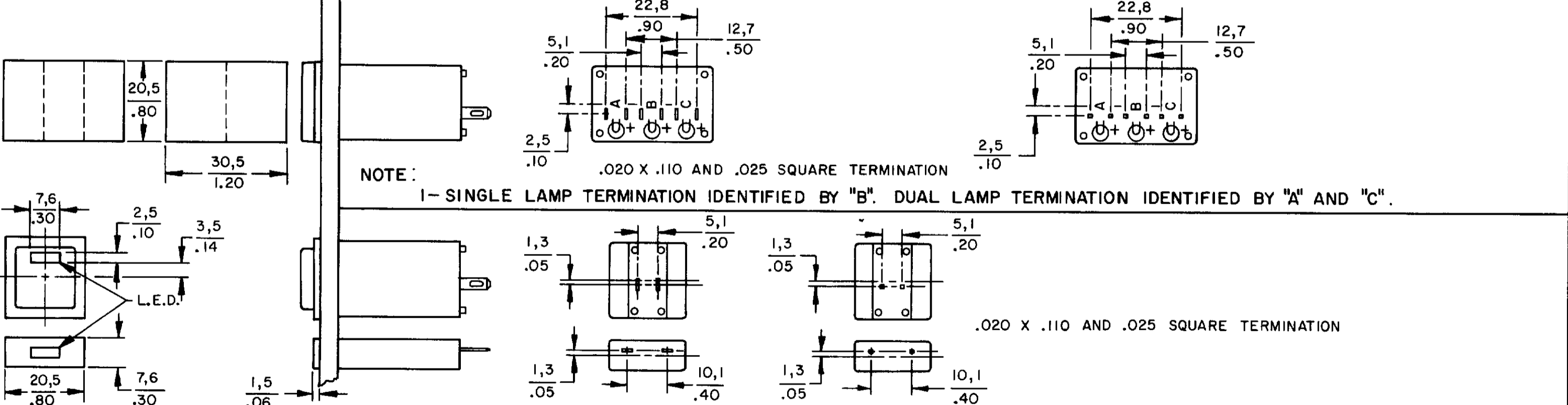
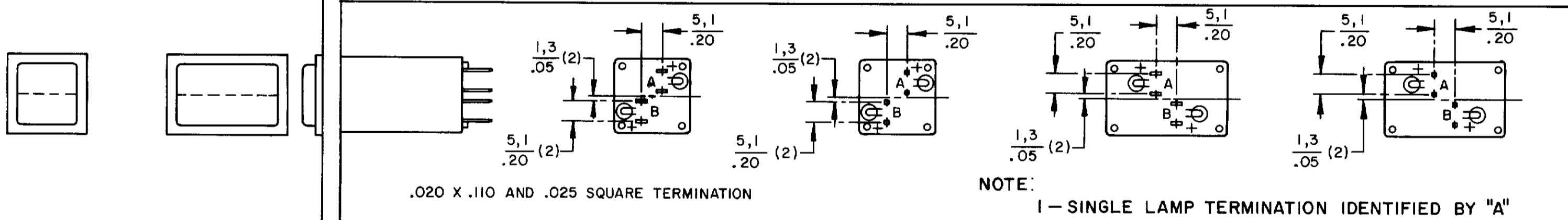


POWER SWITCH AML 30 SERIES

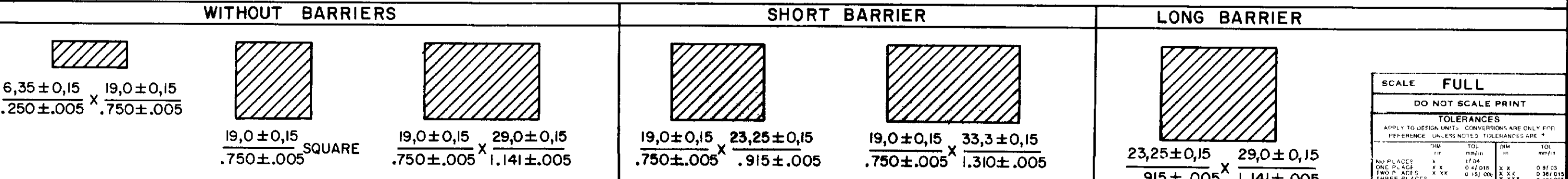
LINE POWER IND AML 43 SERIES



INDICATORS AML 40 SERIES



PANEL CUTOUTS



SCALE FULL	
DO NOT SCALE PRINT	
TOLERANCES	
APPLY TO DESIGN UNITS - CONVERSIONS ARE ONLY FOR REFERENCE UNLESS NOTED OTHERWISE	
FRAC	DEC
1/16	.03125
1/8	.0625
3/16	.1875
1/4	.2500
5/16	.3125
3/8	.3750
7/16	.4375
1/2	.5000
5/8	.6250
3/4	.7500
7/8	.8750
1	1.0000
NO PLACES	
ONE PLACE	0.0500
TWO PLACES	0.0050
THREE PLACES	0.0005
ANGLES	
DI METRIC	<input checked="" type="checkbox"/>
US CUSTOMARY	<input type="checkbox"/>
DESIGN UNITS	
THIRD ANGLE PROJECTION	
WEIGHT	

CATALOG LISTING
AML 10 20 30 40
 PAGE 1 OF 1 SERIES CHART 1
 RELEASE NO. CO-78498 REPLACES CO-78498 & 40 SERIES
 ISSUE 6
 REVISIONS:
 A 209297 6 J W 8 JUL 89
 B 201477 6 J W 9 OCT 00
 C 201566 C S L 20 OCT 00
 D 201696 D J V 00
 E 202971 C S L 30 APR 01
 DRAWN JAK 17 JUN 94 CHECK JAF 11 JUL 04
 RASTER